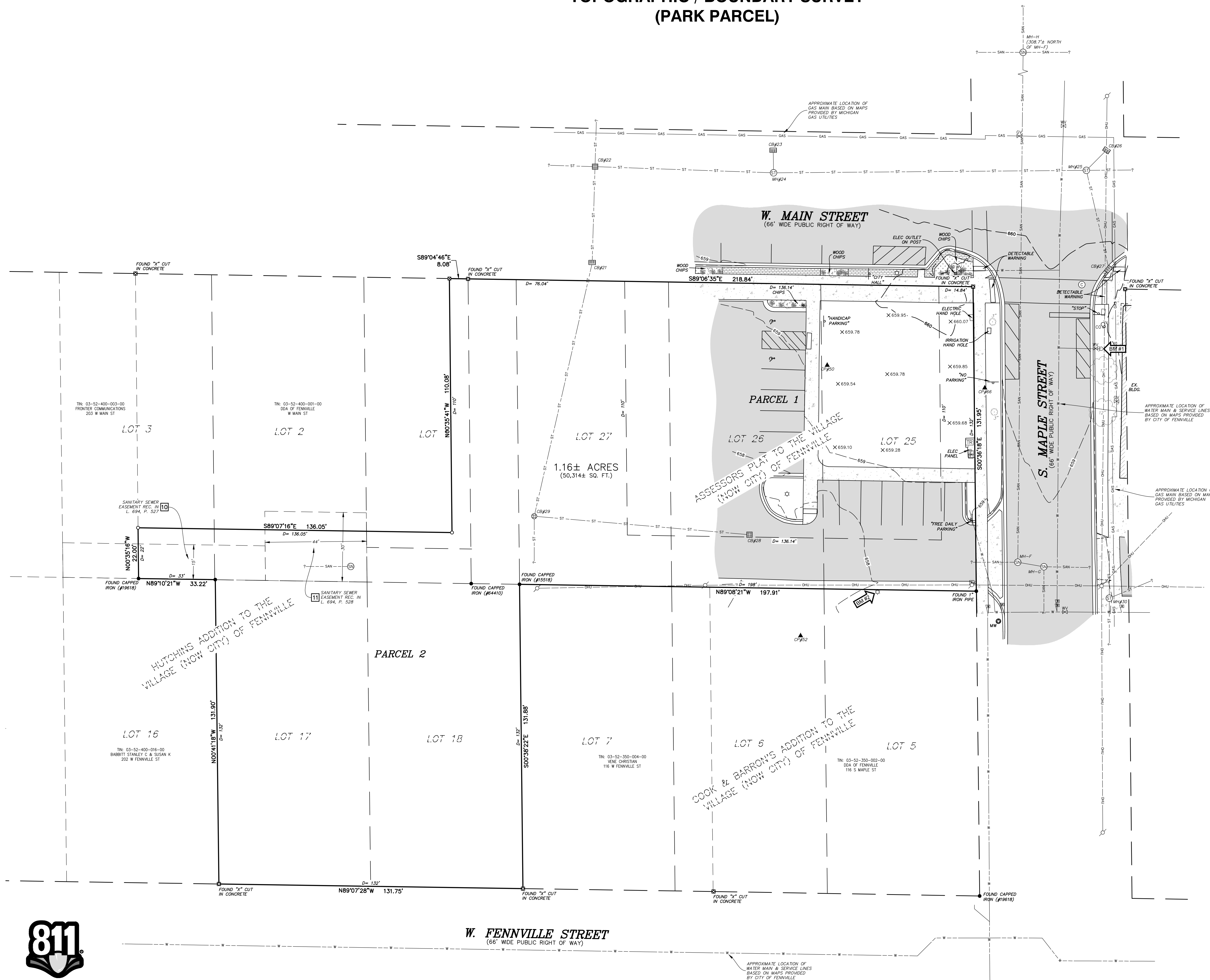
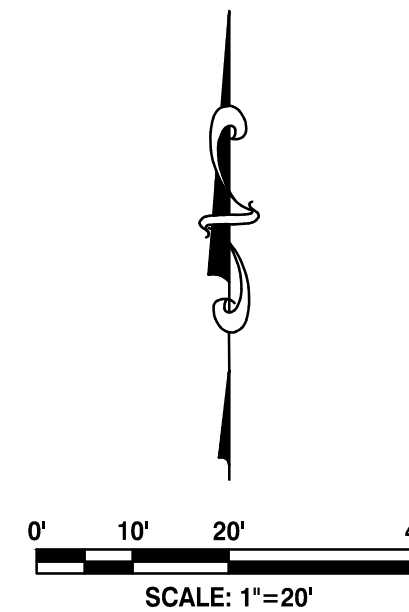


TOPOGRAPHIC / BOUNDARY SURVEY (PARK PARCEL)



LOCATION MAP - NO SCALE



LEGEND

- | | |
|--|--|
| BENCHMARK | |
| SET CONCRETE MONUMENT | |
| MONUMENT FOUND | |
| SET CAPPED REBAR #62895 | |
| FOUND IRON | |
| SET CHISELED 'X' | |
| FOUND CHISELED 'X' | |
| CONTROL POINT | |
| PLATTED | |
| DESCRIBED | |
| MEASURED | |
| RECORD | |
| STORM SEWER MANHOLE | |
| CATCH BASIN | |
| ROOF DRAIN | |
| SANITARY SEWER MANHOLE | |
| CLEANOUT | |
| WELL HEAD | |
| FIRE HYDRANT | |
| FIRE DEPARTMENT CONNECTION | |
| SPRINKLER CONTROL VALVE | |
| SPRINKLER HEAD | |
| GAS (WATER & GAS) | |
| VALVE (WATER & GAS) | |
| GAS METER | |
| UTILITY RISERS | |
| UTILITY POLE | |
| LIGHT POLE | |
| GUY ANCHOR | |
| TRANSFORMER | |
| HAND HOLE (ELECTRIC) | |
| ELECTRIC METER | |
| GROUND MOUNTED LIGHT | |
| SIGN | |
| SOIL BORING | |
| BOLLARD POST | |
| POST | |
| UNDERGROUND COMMUNICATIONS LINE MARKER | |
| UNDERGROUND ELECTRIC LINE MARKER | |
| UNDERGROUND GAS LINE MARKER | |
| GATE | |
| FENCE LINE | |
| OVERHEAD UTILITIES | |
| UNDERGROUND ELECTRIC | |
| COMMUNICATIONS | |
| TELEPHONE | |
| FIBER OPTIC | |
| GAS LINE | |
| EXISTING WATER LINE | |
| EXISTING STORM SEWER | |
| EXISTING SANITARY SEWER | |
| BITUMINOUS SURFACE | |
| CONCRETE SURFACE | |
| GRAVEL SURFACE | |
| BRICK SURFACE | |
| LANDSCAPE AREA | |
| CONIFEROUS TREE | |
| DECIDUOUS TREE | |
| ORNAMENTAL BUSH | |

**DRIESEN &
ASSOCIATES, INC.**

Engineering
Surveying
Testing

— www.driesenga.com

Holland, MI

616-396-0255

616-249-3800

Kalamazoo, MI
866.544.1455

Lansing, MI

517-977-1019

**Ypsilanti, MI
734-368-9483**

LEO COMMUNITY CENTER GRANT PROJECTS
116 S. MAPLE STREET & 400 WEST MAIN STREET, FENNVILLE, MI 49408
SEC 05, T02N, R15W & SEC 32, T03N, R15W, CITY OF FENNVILLE, ALLEGAN CO.

**-FOR-
VIRIDIS DESIGN GROUP**

VIRIDIS DESIGN GROUP
2926 WEST MAIN STREET, KALAMAZOO, MI 49006

REVISIONS

[illegible]

Drawn By:

Drawn By: **GLK**

Scale: 1"=20'

Date:

06-13-2024
Project #

2410439.5A

Sheet Title:

**TOPOGRAPHIC
/ BOUNDARY
SURVEY**

Sheet #

V-102
2 of 3



Know what's **below**.
Call before you dig.

TOPOGRAPHIC / BOUNDARY SURVEY (LIBRARY PARCEL)

File: C:\Users\jerry_knapp\OneDrive\Projects\2024\24104339-5A\Map\24104339-5A_Topo.dwg Plot Date: 7/19/2024 1:32 PM

Know what's below.
Call before you dig.

W. 1ST STREET
(66' WIDE PUBLIC RIGHT OF WAY)

W. MAIN STREET
(66' WIDE PUBLIC RIGHT OF WAY)

MARY STREET
(66' WIDE PUBLIC RIGHT OF WAY)

ROSE STREET
(66' WIDE PUBLIC RIGHT OF WAY)

PARCEL 1

PARCEL 2

LOT 12

LOT 13

LOT 14

LOT 15

LOT 16

LOT 17

LOT 18

LOT 19

LOT 20

LOT 21

LOT 22

LOT 23

LOT 24

LOT 25

2.42± ACRES
(105,289± SQ. FT.)

TWO-STORY BRICK LIBRARY
400 W. MAIN ST.

ORIGINAL TOWN OF THE VILLAGE
(NOW CITY) OF FENNVILLE

LEGEND

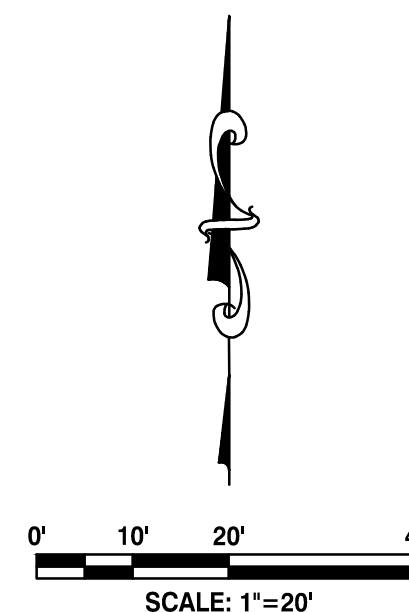
- BENCHMARK
- SET CONCRETE MONUMENT
- MONUMENT FOUND
- SET CAPPED REBAR #62695
- FOUND IRON
- SET CHISELED "X"
- FOUND CHISELED "X"
- CONTROL POINT
- PLATTED
- DESCRIBED
- MEASURED
- RECORD
- STORM SEWER MANHOLE
- CATCH BASIN
- ROOF DRAIN
- SANITARY SEWER MANHOLE
- CLEANOUT
- WELL HEAD
- FIRE HYDRANT
- FIRE DEPARTMENT CONNECTION
- SPRINKLER CONTROL VALVE
- SPRINKLER HEAD
- VALVE (WATER & GAS)
- GAS METER
- UTILITY RISERS
- UTILITY POLE
- LIGHT POLE
- GUY ANCHOR
- TRANSFORMER
- HAND HOLE (ELECTRIC)
- ELECTRIC METER
- GROUND MOUNTED LIGHT
- SIGN
- SOIL BORING
- BOLLARD POST
- POST
- UNDERGROUND COMMUNICATIONS LINE MARKER
- UNDERGROUND ELECTRIC LINE MARKER
- UNDERGROUND GAS LINE MARKER
- GATE
- FENCE LINE
- OVERHEAD UTILITIES
- UNDERGROUND ELECTRIC
- COMMUNICATIONS
- TELEPHONE
- FIBER OPTIC
- GAS LINE
- EXISTING WATER LINE
- EXISTING STORM SEWER
- EXISTING SANITARY SEWER
- BITUMINOUS SURFACE
- CONCRETE SURFACE
- GRAVEL SURFACE
- BRICK SURFACE
- LANDSCAPE AREA
- CONIFEROUS TREE
- DECIDUOUS TREE
- ORNAMENTAL BUSH

SCALE: 1"=20'

LOCATION MAP - NO SCALE



LOCATION MAP - NO SCALE



LEGEND

- | | | |
|--|--|-------|
| BENCHMARK | | BM #1 |
| SET CONCRETE MONUMENT | | |
| MONUMENT FOUND | | |
| SET CAPPED REBAR #62895 | | |
| FOUND IRON | | |
| SET CHISELED 'X' | | |
| FOUND CHISELED 'X' | | |
| CONTROL POINT | | |
| PLATTED | | |
| DESCRIBED | | |
| MEASURED | | |
| RECORD | | |
| STORM SEWER MANHOLE | | |
| CATCH BASIN | | |
| ROOF DRAIN | | |
| SANITARY SEWER MANHOLE | | |
| CLEANOUT | | |
| WELL HEAD | | |
| FIRE HYDRANT | | |
| FIRE DEPARTMENT CONNECTION | | |
| SPRINKLER CONTROL VALVE | | |
| SPRINKLER HEAD | | |
| VALVE (WATER & GAS) | | |
| GAS METER | | |
| UTILITY RISERS | | |
| UTILITY POLE | | |
| LIGHT POLE | | |
| GUY ANCHOR | | |
| TRANSFORMER | | |
| HAND HOLE (ELECTRIC) | | |
| ELECTRIC METER | | |
| GROUND MOUNTED LIGHT | | |
| SIGN | | |
| SOIL BORING | | |
| BOLLARD POST | | |
| POST | | |
| UNDERGROUND COMMUNICATIONS LINE MARKER | | |
| UNDERGROUND ELECTRIC LINE MARKER | | |
| UNDERGROUND GAS LINE MARKER | | |
| GATE | | |
| FENCE LINE | | |
| OVERHEAD UTILITIES | | |
| UNDERGROUND ELECTRIC COMMUNICATIONS | | |
| TELEPHONE | | |
| FIBER OPTIC | | |
| GAS LINE | | |
| EXISTING WATER LINE | | |
| EXISTING STORM SEWER | | |
| EXISTING SANITARY SEWER | | |
| BITUMINOUS SURFACE | | |
| CONCRETE SURFACE | | |
| GRAVEL SURFACE | | |
| BRICK SURFACE | | |
| LANDSCAPE AREA | | |
| CONIFEROUS TREE | | |
| DECIDUOUS TREE | | |
| ORNAMENTAL BUSH | | |

**DRIESEN &
ASSOCIATES, INC.**

Engineering
Surveying
Testing

— www.driesenga.com —

Holland, MI

Grand Rapids, MI

616-249-3800

**Kalamazoo, MI
269-544-1455**

Lansing, MI

517-977-1019

**Ypsilanti, MI
734-368-9483**

LEO COMMUNITY CENTER GRANT PROJECTS
116 S. MAPLE STREET & 400 WEST MAIN STREET, FENNIVILLE, MI 49408
SEC 05, T02N, R15W & SEC 32, T03N, R15W, CITY OF FENNIVILLE, ALLEGAN CO.
-FOR-
VIRIDIS DESIGN GROUP
2926 WEST MAIN STREET, KALAMAZOO, MI 49006

REVISIONS

[illegible]

Drawn By: **GLK**

Scale: $1'' = 20'$

Date: 06-19-2024

Project #
2410439.5A

Sheet Title:

**TOPOGRAPHIC
/ BOUNDARY
SURVEY**

Sheet #

V-103
3 of 3



Know what's **below**.
Call before you dig.